

Men and Women Our Hair Loss Concealer is effective for both men and women. In fact women are some of our happiest customers. Whether you're a man or woman, our hair loss concealer will work wonders for both.



Bendable Colors Look at your hair roots in the mirror. This is the color to match. If you dye your hair one color, match that color. If you highlighted ends with darker roots, match the root color if your hair color falls between shades or if your hair is turning gray, you can blend colors. All of our colors are blendable. Rub your applicator in the darker colors first and then into the lighter colors for a custom blend. You can also apply one color on top of the other.



HairPlaceNYC.com Everything Hair
855 Lexington Ave 2nd Flr, New York NY 10065
Bet 64th-65th Streets — 212-249-8866



HAIR LOSS RESOURCES

Books

Consumer Reports:

Your Hair-Helping To keep it.
by Neil S. Sadick, MD.

The Bald Truth

by Spencer David kobren
www.thebaldtruth.com

Professional Organizations

American Academy of Dermatology
(847) 240-1280 www.aad.org Find a dermatologist near you, get detailed info on them and get brochures on hair loss and other topics.

International Society of Hair Restoration Surgery
www.ishrs.org Find a member surgeon near you from the first society dedicated to the advancement of this practice.

National Alopecia Areata Foundation
(415) 472-3780 www.naaf.org Get current treatment options and donate to their research into this rare disease that can target children.

Website

www.HairLossScams.com

Learn how to spot fraudulent hair growth products and how to find the most clinically effective products.

www.AmericanHairloss.org

See the latest news in miracle drugs, surgical techniques, hair systems and much more.

www.HairLossTalk.com

Interact with people in exactly your situation and get trusted advice from one of the planet's most-visited hair loss sites.

HairPlaceNYC.com Everything Hair

855 Lexington Ave 2nd Flr, New York NY 10065
Bet 64th-65th Streets — 212-249-8866



HAIR CONCEALER

Great for Hair Loss & Covering Greys

It Looks better, stays on longer, and applies neater so it costs less to use.



Works for men and women of any age, hair color, skin color or hair style.

Make your hair look thick and full with HairPlaceNYC Hair Loss Concealer.

Loaded with botanical and naturally derived ingredients. We guarantee it.

HAIRPLACENYC.COM

HairPlaceNYC, Hair Loss Concealer

Works adding remarkable fullness to thin hair while causing small bald areas to disappear. You can brush it, swim or sweat with it and any shampoos remove it. Our product conditions and moisturizes your skin and will never affect your hair's natural growth

Our Hair Loss Concealer

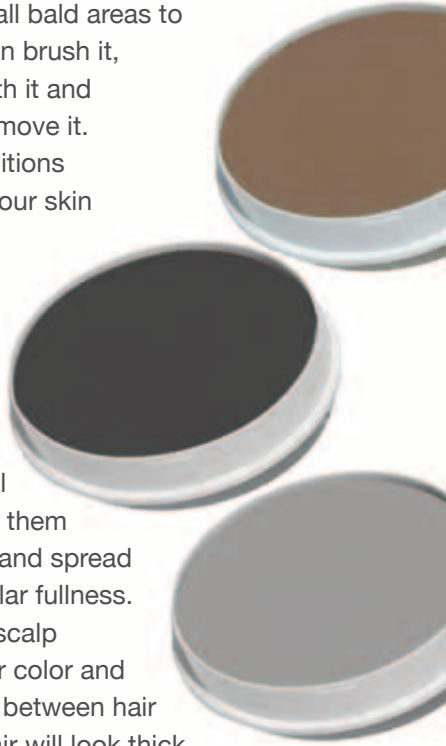
works quickly to coat the individual thin hairs, making them stand up straight and spread out for spectacular fullness. It also colors the scalp to match your hair color and cover grays for in between hair colorings. Your hair will look thick, with a natural hairline.

HairPlaceNYC, Hair Loss Concealer

is water resistant. You can exercise and sweat, dive in a pool and you won't have to worry about it wearing off. It removes with any any shampoos, and is

Good for all hair types.

You can use it from front to back of your scalp and with permed, kinky, curled or dyed hair. Our product contains no hair dye and it's safe for colored treated hair.



Easy application. Our application is quick, clean and precise. Our products give you the easy reach applicators and helpful step by step instructions with photos.

For Men

1



For Women



1. Rub your applicator directly on the scalp. Color one small area at a time. if your applying along the front hairline, color behind the hairline, never in front of it. Create a soft, natural hairline by fading the edge of your color. Use a dry applicator and rub gently along the edge of your color so that your color fades gradually towards the forehead. Continue applying until all exposed areas are colored evenly. Use a hand mirror when coloring the back of the head. Keep your applicator damp as you rub again in the container for more colored powder. To color grey hair, just rub the applicator on the hair.

For Men

2



For Women



2. When you're done coloring the area, brush or comb your hair right away while it's still damp from application so it can coat and thicken any thin hairs. Now your application needs to dry. If you normally blow dry, use low heat and low wind. Otherwise, brushing or combing every few minutes will speed drying. The hair roots are the last to dry. So be sure to brush or comb down to the roots, This helps maximize your hair's fullness. Your application is dry when it's dry to the roots.

For Men

3



For Women



3. When you application is completely dry, brush your hair thoroughly. Use a firm, salon-quality brush. Brush down to the roots and out to the ends. Thoroughly brushing of your dried application gives a final lift to thin hairs now coated and thickened by Hairplace NYC, Hair Loss Concealer. Wet Wipes help remove any excess Hair Loss Concealer and also removes excess powder from the back of your neck and shoulders. or if you have excess powder on your forehead. If there excess powder on your clothing shake it off with a blow dryer. Use any shampoo to remove excess Hair Loss Concealer .

Safe and Healthful. The primary ingredients in Our Hair Loss Concealer are emollients that soften and moisturizes your skin. The formula also contains botanical and other naturally derived ingredients. Our Hair Loss Concealer does not grow hair nor does it impede the growth of hair. Both hair growth and hair loss are subdermal, occurring beneath the skin's surface. Our Hair Loss Concealer is tropical, resting on the skin's surface where it has no interaction with the biology of hair growth.

Rogaine and Propecia. You can use our Hair Loss Concealer with either Rogaine or Propecia. Rogaine should always be applied before applying Our Hair Loss Concealer. Propecia is taken orally and with it there are no such considerations.

Hair Transplants. Always consult with your surgeon before using Our Hair Loss Concealer, or any cosmetic product after surgery. Our Hair Loss Concealer can be safely used on transplanted hair anytime beyond the scab phase.

Grey hair and root coloring. Are you getting grey hairs? Do your roots need coverage between coloring? Our Hair Loss Concealer is perfect for tinting grey hairs and coloring roots. The effect is temporary, until you shampoo. Our Hair Loss Concealer contains only safe colorants and no harmful hair dyes.

HAIRPLACE NYC
EVERYTHING HAIR

855 Lexington Ave 2nd Flr, New York NY 10065
Bet 64th-65th Streets — 212-249-8866